



Osceola Electric Cooperative

A Touchstone Energy® Cooperative

The power of human connections®



August 2024

CONTACT US

Office:

1102 Egret Drive
Sibley, IA 51249

Office Hours:

Monday-Friday
7:30 am to 4:00 pm

Phone:

Local: 712-754-2519
Toll Free: 888-754-2519

On evenings, weekends or holidays an answering service will accept power outage or emergency type calls only.

Online:

osceolaelectric.com

FIND YOUR ACCOUNT NUMBER

Three account numbers are hidden within the newsletter. Notify us if you find your number and we'll credit your account \$5. Confirm your account number on the top of your statement. Account numbers must be yours to claim.

OEC RECIPES

Submit your favorite Slow Cooker Recipes for consideration to be printed in our November Newsletter. Submission deadline is October 20. Printed recipes are worth a \$10 bill credit.

In observation of Labor Day Osceola Electric Cooperative will be closed September 2.

2024 Member Appreciation

Join us for supper at the OEC office August 27 from 5:00-7:00!

Burgers will be grilled by the Melvin 313 Club with potato salad and baked beans. \$20 bill credit for those in attendance and adult & kid prize drawings every half hour.

2024 Basin Bus Tour

In June members of Osceola Electric Cooperative boarded a bus to North Dakota to see how electricity is generated and meet the people responsible for providing power to their homes, farms and businesses. OEC's generation and transmission Co-op, L&O Power Cooperative, sponsored the bus and joined with Lyon REC out of Rock Rapids, IA and Federated REA out of Jackson, MN to fill it. This year's tour took place June 12-14 with a goal of showing the value of a diverse energy portfolio, which includes coal as part of an all-of-the-above energy strategy.

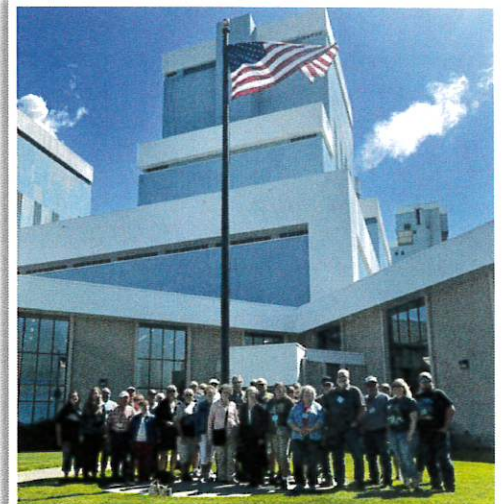
Once arriving in Bismarck members heard from a Basin Power Cooperative speaker who provided information about the complexity of the electric grid and impressive statistics of Basin Power Cooperative.

The Thursday tours showcased generation facilities, including hydropower from the Garrison Dam on the Missouri River, and the coal-fired Antelope Valley Station in Beulah, North Dakota. Next on the tour list was Coteau Properties Company Freedom Mine where members saw the mining process of the area's lignite coal. The guided drive-through tour took attendees through active mining areas where members witnessed giant earth-moving equipment in action. The tour guide also gave details about the exten-

sive process they take to return the land back to a safe and prosperous habitat for wildlife and plants. The North American Coal Company's award-winning reclamation solutions responsibly reclaim the prairie or cropland to be as good as, or better than when the mining began.

The evening concluded with a relaxing supper cruise up and down the Missouri River on the Lewis & Clark Riverboat.

This 3-day trip is part of Osceola Electric Cooperative's commitment to providing education for our members. Plans are underway for the 2025 trip. View more photos at the Member Appreciation Supper and sign up to win a seat on the 2025 Basin Bus Tour! **25310**



Tour attendees in front of Basin's Antelope Valley Station.

Visit us at the State Fair



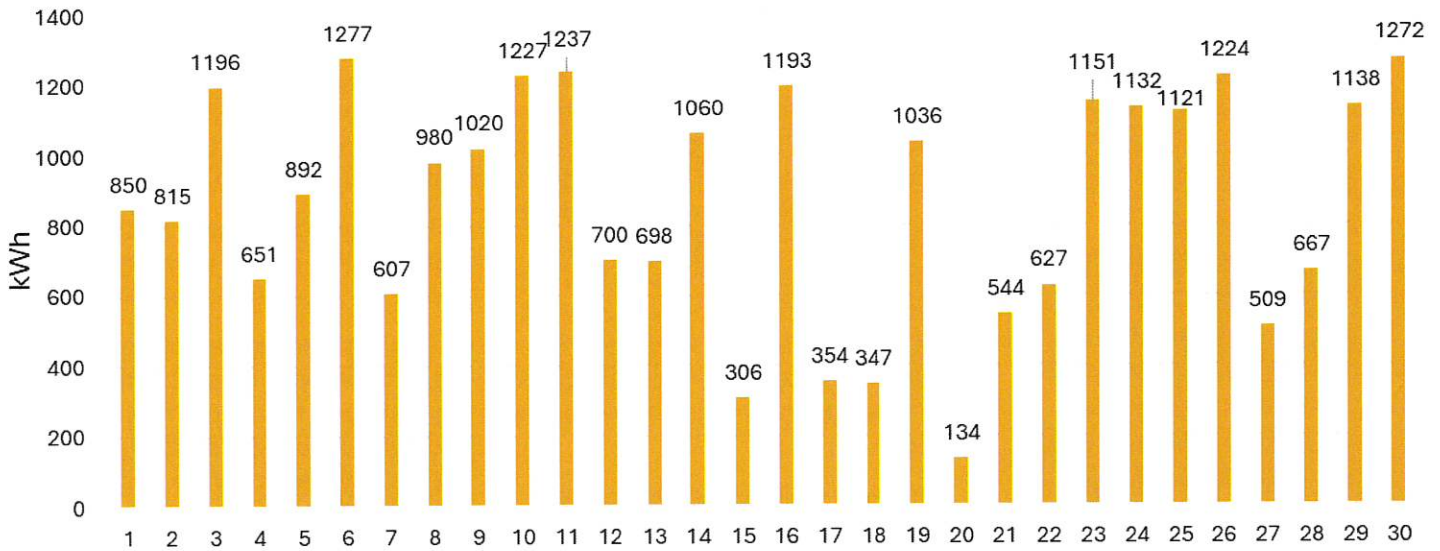
The Touchstone Energy Cooperatives of Iowa are pleased to once again sponsor the 4-H Exhibits Building at the 2024 Iowa State Fair. Osceola Electric Cooperative is proud to be a Touchstone Energy member, which

means we're part of a nationwide network of locally owned co-ops that provides resources and leverages partnerships to help member-consumers use energy wisely. If you're planning a visit to the Iowa State Fair from August 8-18, make sure to stop by and see us in the air conditioned 4-H

Exhibits Building on the southwest corner of the fairgrounds. Electric co-op staff from across the state will hand out plastic hard hats and suckers for the kids while supplies last. Kids can also try on some lineworker safety gear and take fun photos in our co-op safety selfie station. We look forward to connecting with our cooperative members at the Iowa State Fair this summer. Please stop by our booth and say hello!



June 2024 Solar Park Production



Operating Statistics for June 2024

	<u>2023</u>	<u>2024</u>
Billed consumers, farm	1,148	1,153
Billed consumers, non-farm and others.....	122	123
Kilowatts sold, farm.....	2,512,836	2,651,014
Kilowatts sold, non-farm and others.....	6,354,416	6,946,924
Average consumption, farm	2,189	2,299
Average consumption, non-farm and others	52,085	56,479
Average statement, farm.....	\$251.80	\$270.35
Average statement, non-farm and others.....	\$3,929.05	\$4,258.51
Total minimum bills.....	29	22
Outage time per consumer—minutes.....	7 5/9	32 7/9
Energy efficiency added per KWH		0.00022
Annual meeting date.....	March 2025	

Watch the Clock to Lock in Energy Savings

As temperatures rise and summer activities heat up, a reliable flow of electricity is essential to ensure Osceola Electric Cooperative members stay cool and connected.

August brings some of the most extreme summer temps, which means people will be spending more time indoors to avoid the heat, and air conditioners will be working overtime. This increased use of electricity will cause spikes in demand, also known as energy peaks. During

peak times, OEC must work closely with our wholesale power provider to ensure a balanced supply of electricity is always available to meet our community's energy needs.

The electric grid is essentially a giant network that connects power plants, utility poles and power lines to homes and businesses across the country, throughout our state and to our local communities. **91** All parts of the network must work together to ensure the flow of electricity stays balanced 24/7.

When the demand for electricity is higher than usual, power providers must ramp up electricity production—whether from coal, natural gas, wind, solar or other energy sources—and utilities will pay more for electricity produced during the peak.

When our area experiences extreme summer heat and higher demand for electricity, you can help by conserving energy. It's easy—just check the clock and avoid your energy-intensive activities and chores during peak

TIPS TO BEAT THE SUMMER PEAK

When we all work together to lower energy use during peak hours, we can lock in lower electricity rates, so everyone saves. Here are a few simple ways to save during peak summer hours.

- 1** Raise the thermostat a few degrees.
- 2** Use ceiling fans (in occupied rooms) to feel cooler.
- 3** Avoid using major appliances.
- 4** Close drapes and blinds to block heat from the sun.
- 5** Turn off and unplug non-essential electronics and lights.



hours. OEC's peak hours are generally from 4:00 pm to 7:00 pm.

When we all work together to reduce energy use during peak times, OEC can lock in lower electricity rates so everyone in our community saves. Conserving during peak times also eases pressure on the grid and helps balance the supply and demand of electricity.

There are many ways to lower your home energy use. Here are a few recommendations to help you save energy (and money) during the summer peak:

- Set your thermostat a few degrees higher. If you have a smart or programmable thermostat, adjust the settings so your cooling system syncs with the off-peak hours.
- Speaking of raising the thermostat, did you know ceiling fans can make you feel 4 degrees cooler? Operate ceiling or oscillating fans in occupied rooms to supplement your air condi-

tioning. Be sure to raise the thermostat while fans are running for maximum energy savings. Remember, fans cool people (not homes), so turn them off when you leave the room.

- Plan energy-intensive activities like laundry and running the dishwasher for off-peak hours. Use automatic timers to run hot tubs, pool pumps, water heaters and other appliances in the same way.
- Unplug electronics when they're not in use or use power strips to manage devices.
- Close drapes and blinds during the afternoon to block unnecessary heat from sunlight.

When we all work together to beat the summer peak, our entire community benefits. Saving energy reduces your bills, keeps electric rates lower for all and relieves pressure on the grid.

ENERGY EFFICIENCY TIP OF THE MONTH

Placing heat sources, such as lamps, computers or TVs, near your thermostat can result in false temperature readings, increased energy use and inconsistent cooling/heating. Make sure your thermostat is installed in an area clear of obstructions, electronic devices, direct sunlight and drafts.

Ensuring your thermostat is free from these types of interferences optimizes energy efficiency, improves indoor comfort and reduces wear and tear on your cooling/heating system.

Source: *energy.gov*

Member Recipe

Summer Vegetable Recipe

Broccoli Salad Ardine Dillingham

- 1 bunch broccoli
- 1 small red onion
- 1/2 cup raisins
- 10 slices of bacon fried & crumbled or bacon bits

Dressing

- 1 cup mayonnaise
- 1/2 cup sugar
- 2 tablespoons vinegar

Mix well and refrigerate.



Safety

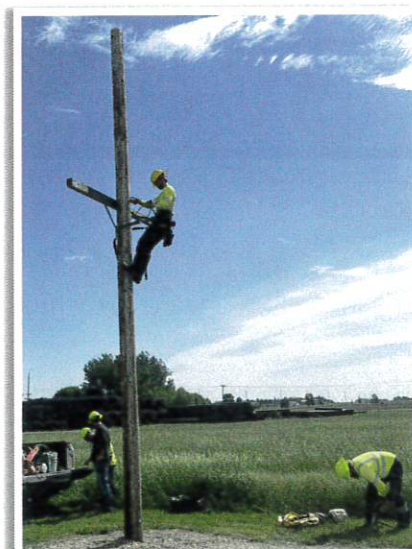
Each month Osceola Electric Cooperative employees participate in safety meetings. These meetings consist of reviewing safety protocols, discussion of recent incidents, and updates on new safety equipment and procedures. **48422** This time is also used to share experiences and make suggestions. These safety meetings are vital to help ensure the well-being of our staff and job efficiency.

The June safety meeting included

Climbing Review and Bucket Truck Rescue exercises for the linecrew.

Climbing Review consists of climbing up the pole, crossing over the cross arm, circling around the pole, then climbing down to ensure the linemen can safely climb a pole when the need arises.

During Bucket Rescue the linemen show they can use the lower controls to safely lower and tilt the bucket to perform a rescue in case of an emergency.



Keagan practices annual pole climbing during the safety meeting.



Louie proves he can use the lower controls to safely lower the bucket to the ground.



Judd shows he can safely tilt the bucket once it's lowered.