



# Osceola Electric Cooperative

A Touchstone Energy® Cooperative

The power of human connections®



December 2024

## CONTACT US

### Office:

1102 Egret Drive  
Sibley, IA 51249

### Office Hours:

Monday-Friday  
7:30 am to 4:00 pm

### Phone:

Local: 712-754-2519  
Toll Free: 888-754-2519

On evenings, weekends or holidays an answering service will accept power outage or emergency type calls only.

### Online:

osceolaelectric.com

## FIND YOUR ACCOUNT NUMBER

Three account numbers are hidden within the newsletter. Notify us if you find your number and we'll credit your account \$5. Confirm your account number on the top of your statement.

## OEC RECIPES

Submit your favorite Coffee Cake Recipes for consideration to be printed in our February Newsletter. Submission deadline is January 20. Printed recipes are worth a \$10 bill credit.



## Powering Lives, Empowering Communities:

*The Impact of Iowa's Electric Cooperatives*  
Chapter 4: Enduring Affordability

Here's some good news: The average American household is steadily spending less on electricity as a percentage of its income, even as we become increasingly reliant on digital conveniences in our daily lives.

In Iowa, the average household served by electric cooperatives spends about

**\$5.25 PER DAY FOR ELECTRICITY** 

THAT'S CHEAPER THAN BUYING A SANDWICH OR SPECIALTY COFFEE DRINK!

In Iowa, the average household served by electric cooperatives spends about \$5.25 per day for electricity. That's cheaper than buying a sandwich or a specialty coffee drink. While the cost of most goods and services have increased

dramatically over the past 85 years, electricity remains very affordable.

We help our cooperative member-owners use energy wisely through energy efficiency programs, audits, rebates and incentives so they can spend their hard-earned money on other things. Iowa's electric co-ops work hard to control local costs in order to keep rates and fees as low as possible. Because we are member-owned, our rates are cost based; we're not driven by profits like investor-owned utilities.

We invest in technology and innovation to improve service, reliability and efficiency. For example, digital meters allow members to track their electric consumption so they can make changes that can save money on their electric bills.

### COST COMPARISON:

1930s

TODAY

1 KILOWATT-HOUR



Since the 1930s, the average cost per kilowatt-hour has only doubled

1 DOZEN EGGS



1 POSTAGE STAMP



1 GALLON OF GAS



1 GALLON OF MILK



## Why Does Energy Demand Matter

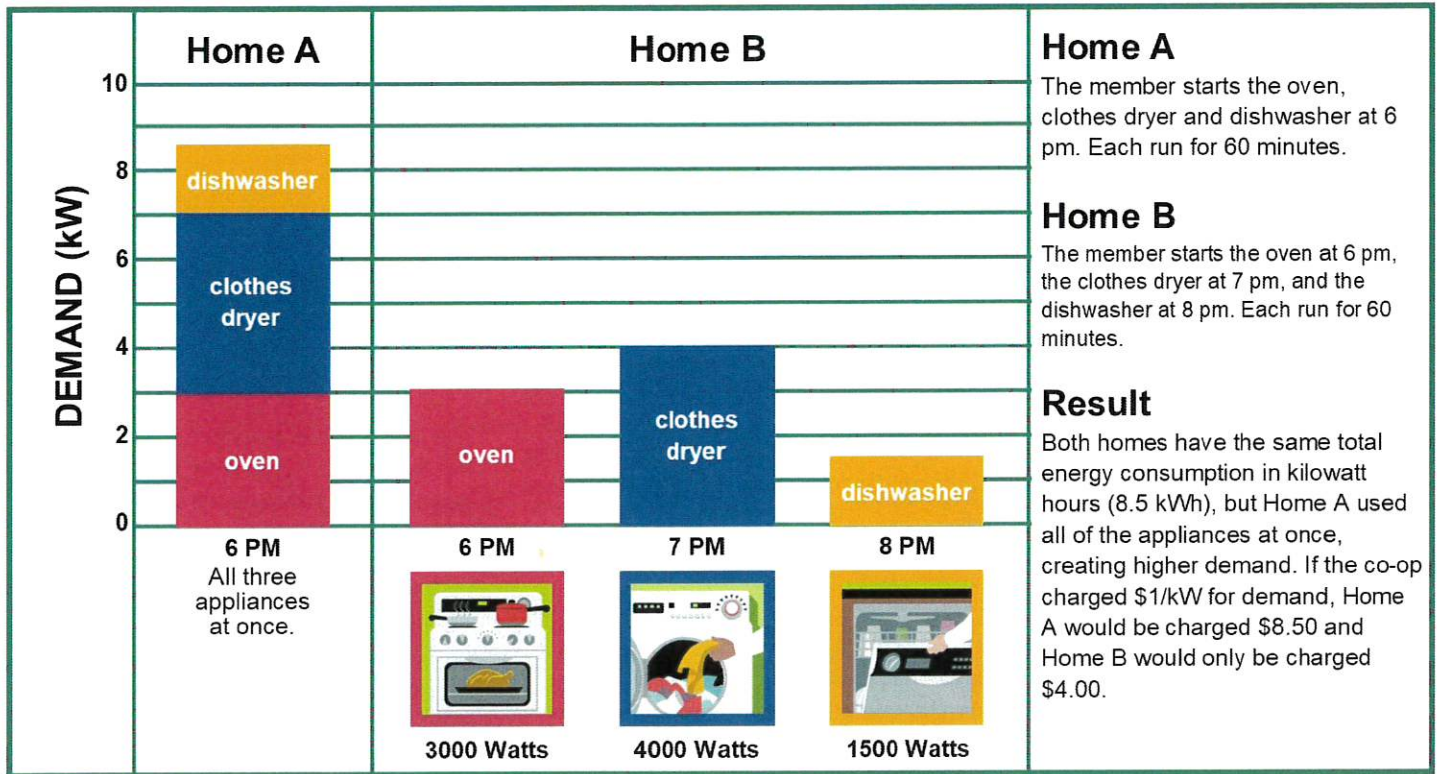
In addition to a fixed charge known as the Facility Charge, most Osceola Electric members are simply billed for the amount of energy they use each month, or energy "consumption". But did you realize that the way you and your neighbors use electricity is just as important as how much electricity you use each month? The higher the "demand" for energy placed on Osceola Electric and its power supplier during peak times of the month, the higher the expenses are for your cooperative. This in turn drives up the cost for all members.

### Energy Consumption vs. Demand

Consumption or energy is measured in kilowatt hours (kWh). Demand is measured in kilowatts (kW). A lightbulb "consumes" a certain number of watts, let's say 100 watts per hour. If that one lightbulb stays on for 10 hours, it's energy is 1 kWh's, it's demand is .1 kW from the generating

station producing electricity. Now, if you turn on ten, 100-watt lightbulbs in your home for one hour, you are still consuming the same amount of energy 1 kWh. However, you are placing a demand on the cooperative to produce 1 kW. This requires the generation station to produce more power in less time in order to meet your demand.

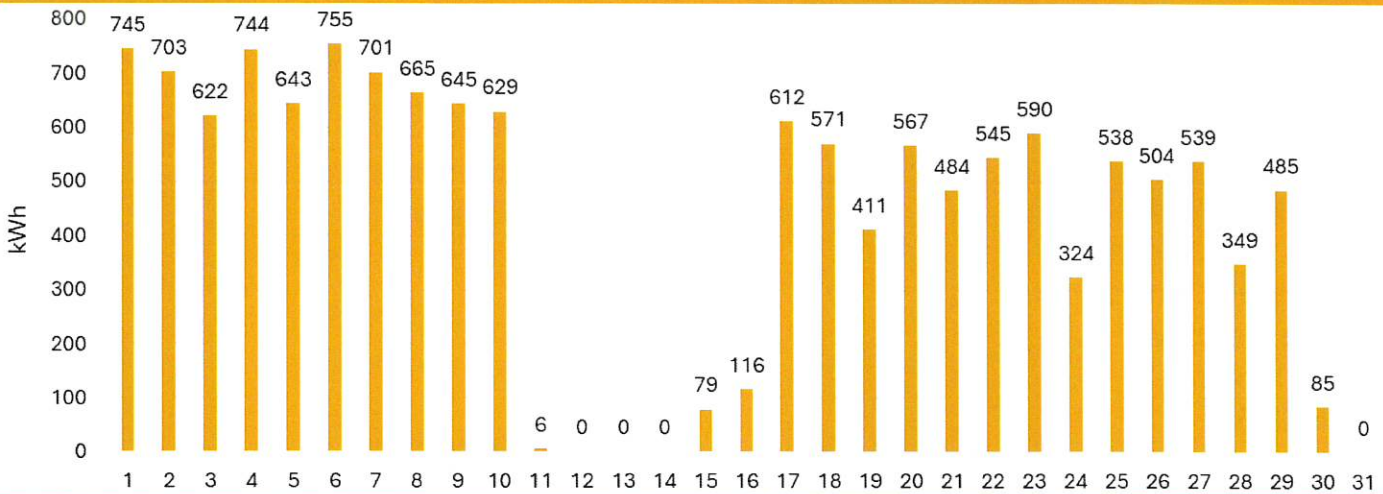
Osceola Electric purchases kilowatt hours from our generation and transmission cooperative (L & O Power Cooperative) based on the average demand of our members. Peak demand refers to the time of day when the demand for electricity is highest. This is typically during the evening, from 4:00 p.m. to 7:00 p.m., when families return home from work or school, cook dinner and use appliances the most. Using electricity during this peak demand period often costs more to both Osceola Electric and our members.



## Operating Statistics for October 2024

	<u>2023</u>	<u>2024</u>
Billed consumers, farm .....	1,150	1,154
Billed consumers, non-farm and others.....	122	124
Kilowatts sold, farm.....	2,630,146	2,736,235
Kilowatts sold, non-farm and others.....	6,215,350	7,657,435
Average consumption, farm .....	2,287	2,371
Average consumption, non-farm and others .....	50,945	61,754
Average statement, farm.....	\$265.14	\$280.57
Average statement, non-farm and others.....	\$3,791.56	\$4,591.28
Total minimum bills.....	13	14
Outage time per consumer—minutes.....	14	5/9
Energy efficiency added per KWH .....		0.00022
Annual meeting date.....	March 2025	26372

## October 2024 Solar Park Production



## Safe Toys Mean Healthy, Happy Kids

December isn't just the month when you buy the most toys and gifts. It's also National Safe Toys and Gifts Month.

Buy toys that are age appropriate so your gift won't be the one that turns a child's holiday into a nightmare.

Here is a checklist for buying safe toys:

- Check the minimum age recommendation on the package. Buy a gift that suits a child's age, ability and interest level. **24171**
- Supervise children while they are using electronic toys. Put the toys away afterward in a dry area out of smaller kids' reach.

- Explain to the child how to use the toy. If it plugs in to the wall, teach the child how to safely use electrical outlets. Demonstrate how to unplug by pulling on the plug itself, not the cord.
- Look for the letters "ASTM," which mean the toy meets the American Society for Testing and Materials' safety standards.
- Avoid buying toys from thrift shops or garage sales; second-hand toys may not adhere to newer safety standards and could be dangerous.
- Keep an eye out for toy recalls online at [www.cpsc.gov](http://www.cpsc.gov).



# Explore

where your electricity comes from

## 2025 BASIN BUS TOUR AUGUST 20-22

### PREVIOUS ITINERARIES INCLUDED:

#### Wednesday

- Load the bus in Sibley
- Donuts in Rock Rapids
- Rest stop at Terry Redlin Art Center
- Lunch at Fargo Pizza Ranch
- Rest Stop at the Jamestown Big Buffalo
- Basin Speaker and supper at the Hotel

#### Thursday

- Breakfast at the hotel
- Garrison Dam Tour
- Sandwich lunch
- Antelope Valley Tour
- Coteau Freedom Mine Tour
- Riverboat Supper Cruise

#### Friday

- Breakfast at the hotel
- Lunch at Watertown Pizza Ranch
- Movies/Bingo on the bus
- Back in Sibley around 5:00

**PRICE  
\$300**

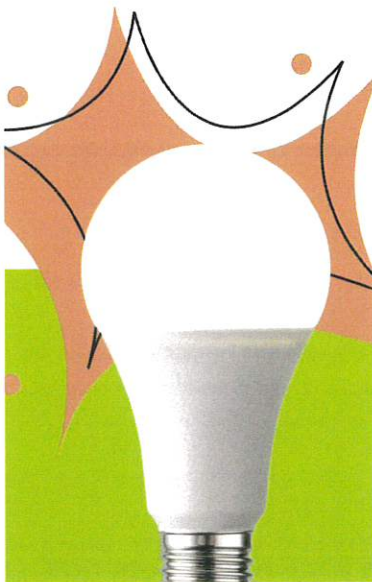
**FOR 2  
INCLUDES:  
HOTEL, MEALS,  
TOUR FEES,  
SNACKS &  
DRINKS ON THE  
BUS**

**Limited Spots Available! Call the office to claim your seat on the bus!**

## ENERGY EFFICIENCY TIP OF THE MONTH

If you're planning to purchase electronic gifts this holiday season, look for the ENERGY STAR® label, which indicates higher energy efficiency performance. Electronics that receive the ENERGY STAR® rating are up to 25% more efficient than standard products. This holiday season, give the gift of energy savings with ENERGY STAR®-rated electronics and equipment.

Source: [energystar.gov](http://energystar.gov)



## Tips for a Safe and Efficient Holiday Season

This holiday season, keep energy savings and electrical safety in mind.

### SAVE ENERGY

- Use smaller appliances like slow cookers instead of the oven.
- Lower the thermostat when hosting friends and family.
- Decorate with energy-saving LED lights.

### PRIORITIZE SAFETY

- Never leave unattended candles burning.
- Ensure all smoke alarms are working.
- When decorating, inspect all light strands and cords for damage.



## Electric Fireplaces Heat Up

If you've always wanted a fireplace but never needed the hassle, it could be time to buy an electric version.

Electric fireplaces can help heat a room and add a bit of ambiance. **4432** And they look much nicer than a simple space heater.

Because electric fireplaces require only floor space and a power outlet, they're a great option for apartments or condos.

If you're in the mood for faux fire, consider:

- If you move frequently, an electric fireplace could be a good investment. Most are portable and are relatively easy to move.
- The look of the "flames" in an electric fireplace is much more natural than it used to be. Still, don't expect too much. The "fire" is created by special light bulbs that simulate flickering flames, but even fireplace sales reps say there's no comparison with the real deal.
- That said, manufacturers have come up with some artful designs using light, glass, rocks and other elements. Even if the fire doesn't look authentic, the fireplace is a conversation starter and can be mesmerizing.

- Because electric fireplaces don't produce actual flames, they usually have a separate heating system built in. Most models allow you to turn the heater off if you want ambiance without heat, which means you can even use your fireplace in the summer. Some models come with a built-in thermostat, so they automatically turn off the heat when the room reaches a certain temperature.
- Unlike their wood-burning counterparts, electric fireplaces can't be used as a backup heat source during a power outage.

